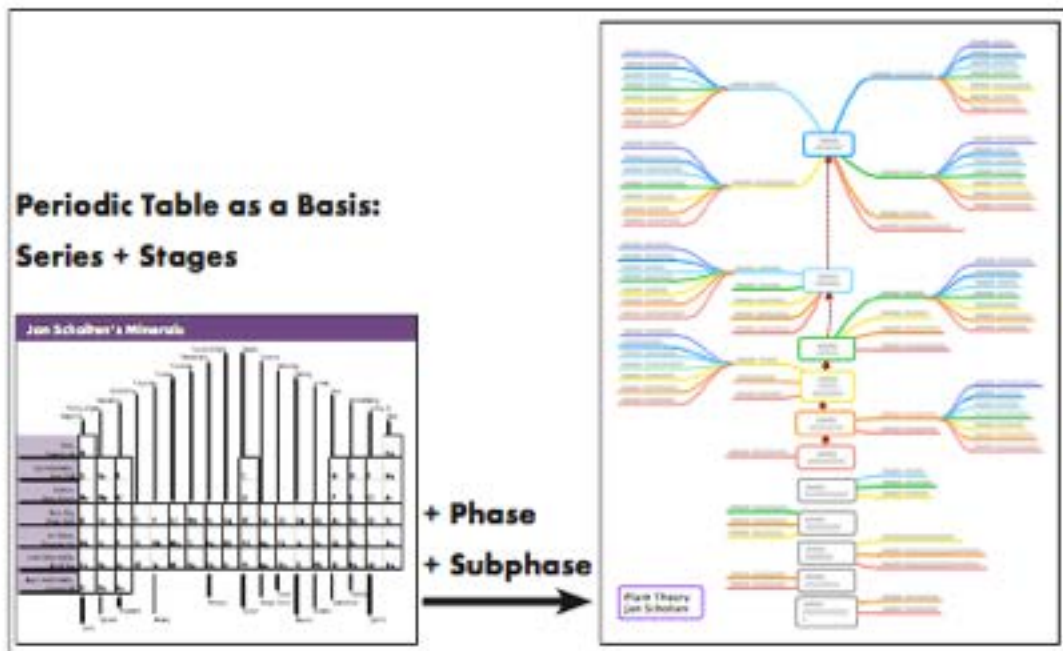


## PLANT SYSTEM

To create the Plant System, Jan Scholten had to use the theory of his Periodic Table with its series and Stages as the basis and added Phases and Subphases to meet the complexity of plant cases.



The system of the plants is, as you see, multi-dimensional. It is not restricted to series and Stages, instead the Phases and sub-Phases are added, which is inevitable, because plant cases are more complex and thus are also multidimensional.

A simple example will illustrate this: When a patient with a nitrogenium quality has also a chlorine theme and has also a problem in his relationship (sulphur), then it is not possible to fit this problem into the two dimensional periodic system, hence it is a good idea to think about a more complex plant remedy.

On the right side of the figure above and on the left page you see the entire plant system, a graphed evolution of the whole plant kingdom, which is evolving from simple to more and more complex plants. At the bottom

you see the algae and on top the probably most developed plants, the Campanulidae.

In the middle of the tree you can detect six different Phyla:

- 1st Phylum: **Archaeoplastidae**
- 2nd Phylum: **Viridiplantae**
- 3rd Phylum: **Bryophyta**
- 4th Phylum: **Pteridophyta**
- 5th Phylum: **Gymnospermae**
- 6th Phylum: **Angiospermae** (Amborellanae, Magnollanae, Lillanae, Fabanae, Malvanae, Asteranae).

They correspond to the series of the periodic table, the main themes of life. The first branch are the sub-Classes, the second the Phases. Subphases and Stages are not visible in the tree, we can imagine them starting from the bough to the twig and then to the leaf.

From Phylum 6, the Angiospermae, we can see a large variety of plants arise, a giant leap in the evolution of the plant kingdom.

With the Angiospermae, there were flowering plants on earth for the first time. Jan Scholten concludes, that with the flowering plants colors came into the world of plants. Colors are of course related to seeing, which is analogous to the Gold series / Lanthanides. The Lanthanides are related to reflected consciousness, the consciousness which is fundamentally inherent to the whole mankind.

We can assume that the majority of the problems of our patients we encounter are dated from the field of Angiospermae, our flowering plants.

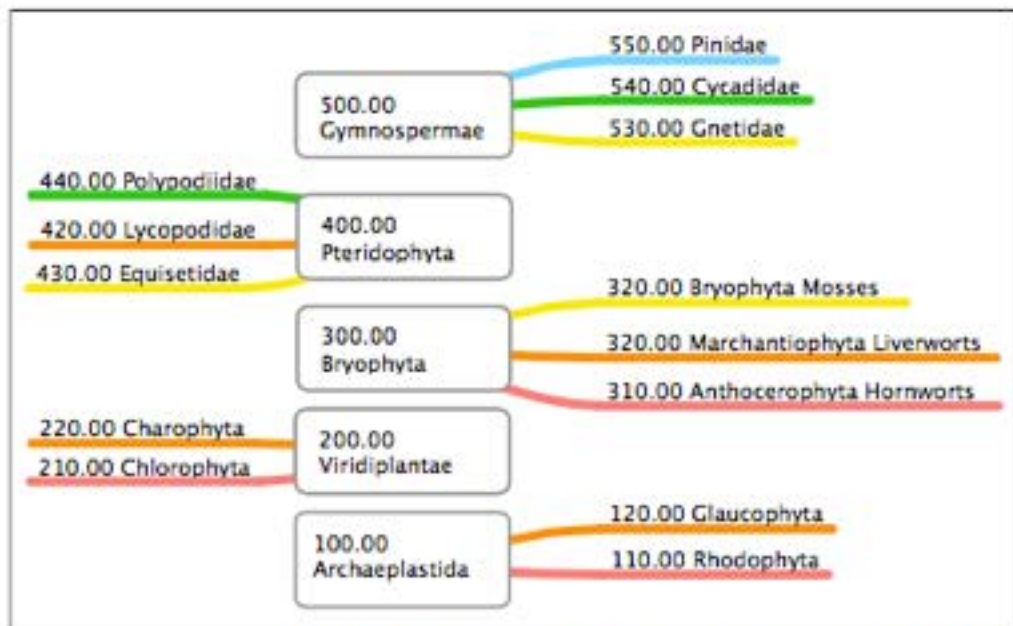
The plants below the Angiospermae are not related to the age of mankind, but to the age of dinosaurs or even older. These plants are helpful for rather archaic themes or themes that have developed before the reflective mind is in work, early childhood, intrauterine, stories of our ancestors, past lives, etc..

The Gymnosperm 500.00 for example, could reflect "ancient religions, where people believe unreflectedly what the bible or the pope had said, or just believe what their leaders say, it has an orthodox, old fashion quality.

In the Polypodiidae 440.00 everything has to stay as it is, one does not want to grow up nor change. One would like to live in a village, be protected with no foreigners. Everything should stay as it is.

For the Bryophyta 300.00, the mosses, proofings have shown themes of surviving in harsh circumstances, or early childhood traumata, and themes of nomadic people or people who have the feeling they are like nomads.

Charophyta 210.00 and Chlorophyta 220.00, where the green algae belong to, are good indication for dementia, because dementia is often accompanied by a loss of identity and patients become like little children. They want to get hold and contact, are unable to control their bladder or bowels.

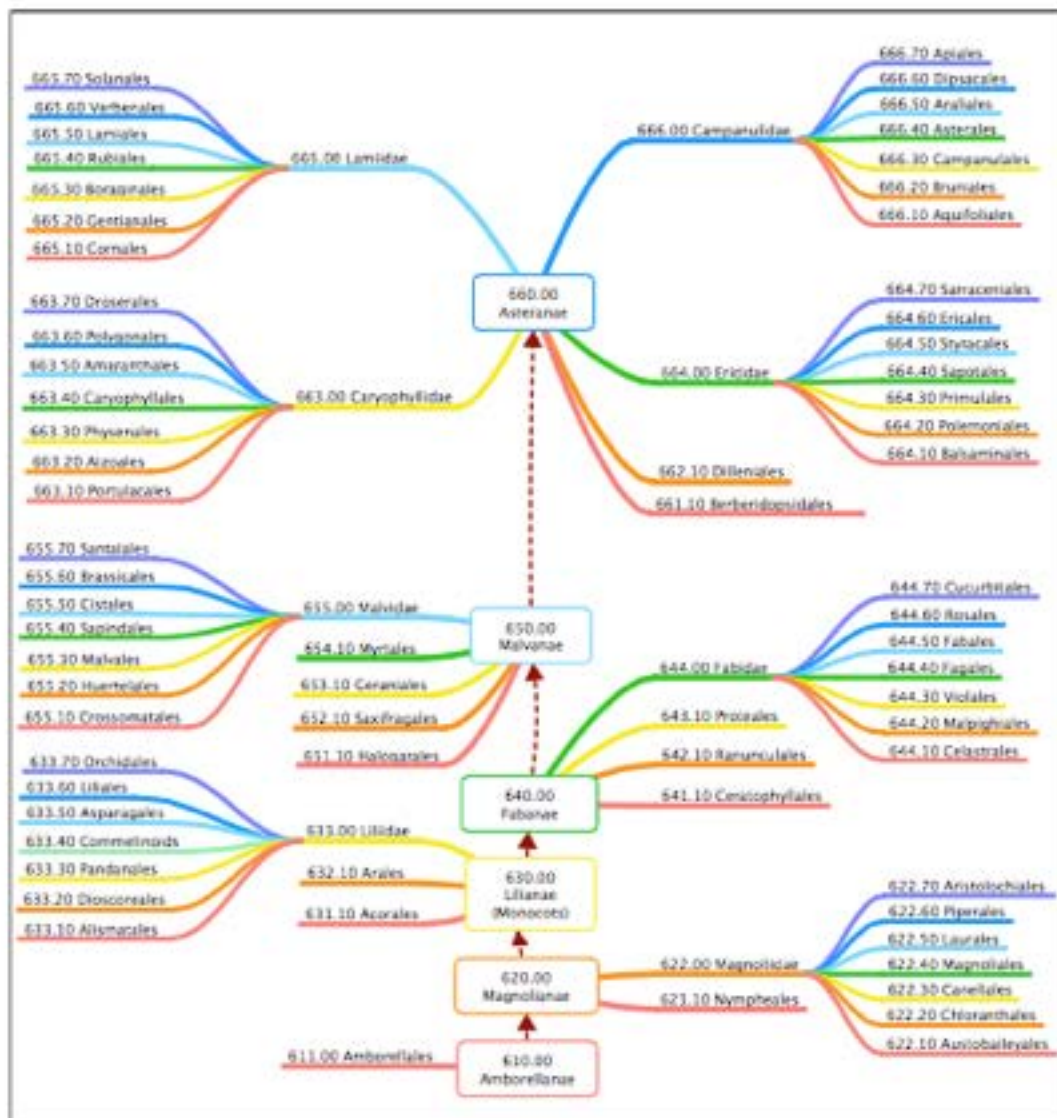


*This part of the tree shows the five more archaic Phyla of the plant system*

Jari Scholten's classification uses the themes of the seven series, seven Stages, again and again, from the big picture to the specifics; science speaks of fractals, a repetition of the whole in every detail. This is because every step is a refinement and at the same time a further analysis of the problem we search a remedy for.



The Angiospermae development starts again, this time in form of Classes with the theme of the Hydrogen series, at the bottom, which is the Amborellanae. From there the evolution goes up to the Class of the Asteranae, the most complex plants of the plant kingdom. In the Phylum of the Asteranae the Lanthanide quality is the strongest.



*This part of the tree shows the Phylum of the Angiospermae*